

REGISTER OF DEEDS CERTIFICATION
 Susan S. Lockridge
 Register of Deeds
 Gaston County, North Carolina
 North Carolina, Gaston County
 I, Susan S. Lockridge, Register of Deeds in and for the aforesaid county and state, hereby certify this to be a true copy of document which is recorded in
 Book _____ Page _____
 Witness my hand and seal of office this _____ day of _____ 20____
 By:
 Susan S. Lockridge Register of Deeds Assistant/Deputy
 State of North Carolina
 County of Gaston

I, _____ Review Officer of Gaston County certify that the map or plat to which this certification is affixed meets all statutory requirements for recording.
 Review Officer _____ Date _____

Certificate of Approval for Recording
 I, hereby, certify that the subdivision plat shown hereon has been found to comply with the Subdivision Regulations for Gaston County, North Carolina and is approved for recording in the Office of the County Register of Deeds.
 Code Enforcement _____ Date _____

Certificate of Approval and Acceptance of Dedication
 I hereby, certify that Gaston County approved this plat or map and accepted the dedication of the street, easement, right-of-way and public parks shown thereon, if any, but assumed no responsibility to open or maintain the same until, in the opinion of the governing body of Gaston County, it is in the public interest to do so. Gaston County has no authority, under laws of the State of North Carolina to maintain streets.
 Date: _____ County Manager _____

Know all men by these presents that _____ certifies that he is the President of American Land Corp. and that this corporation as the owner of the property so indicated hereon, and that it does hereby dedicate to public use as streets, alleys, walks, porches, playgrounds, open spaces, and easements for all areas as shown on said plat.
 This _____ day of _____ 2003
 American Land Corp.
 8020 Cliff Cameron Dr., Suite 450
 Charlotte, N.C. 28269

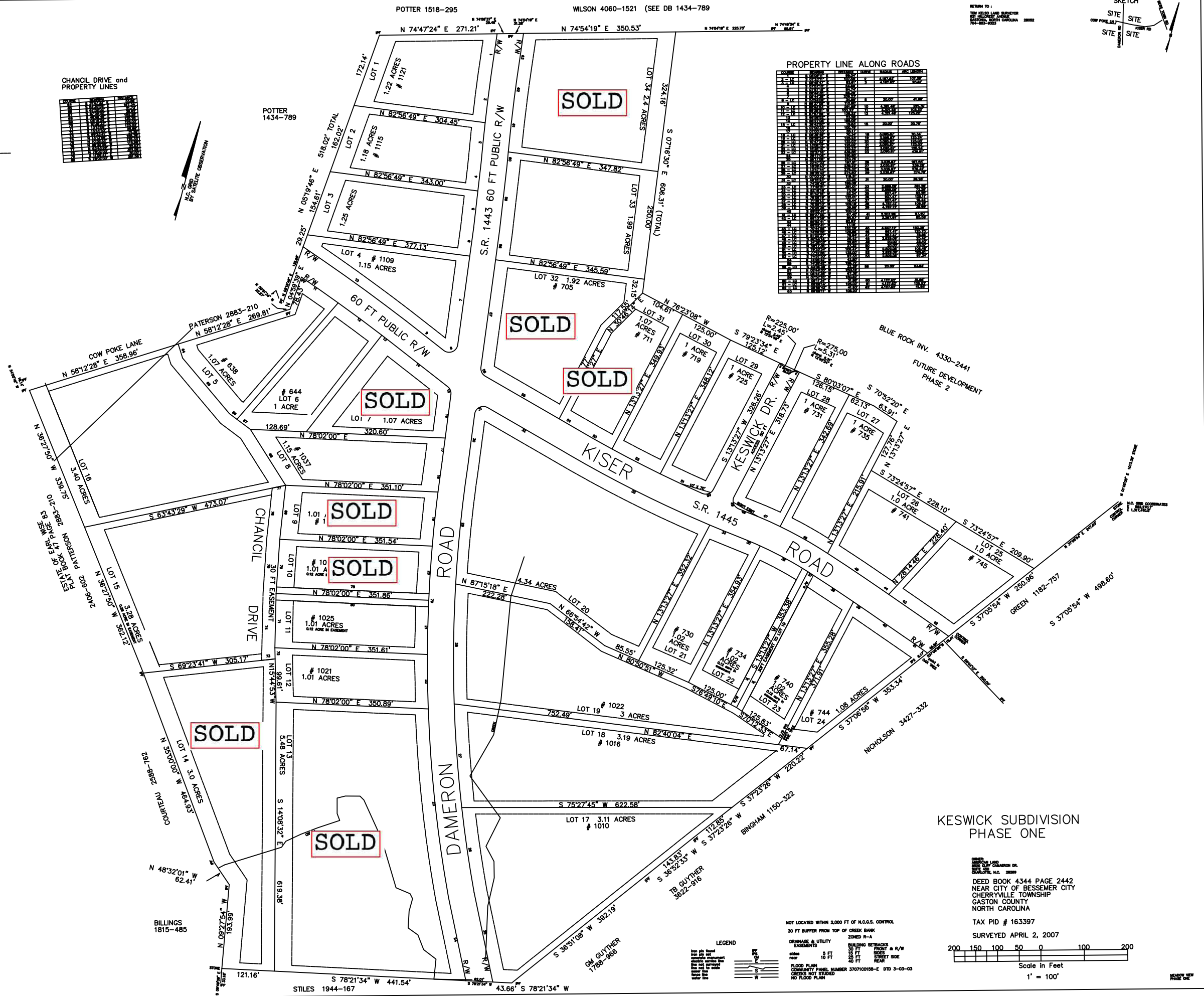
President
 AMERICAN LAND
 8020 CLIFF CAMERON DR.
 SUITE 450
 CHARLOTTE, N.C. 28269

I, Robert T. Kelso, certify to one or more of the following as indicated then, Yes or No
 YES That this plat is a survey that creates a subdivision of land within the limits of a county or municipality that has an ordinance that regulates subdivisions of land.
 NO That this plat is of a survey that is located in each portion of a county or municipality that is incorporated as to an ordinance that regulates subdivisions of land.
 NO That this plat is of a survey of an existing parcel or parcels of land.
 NO That this plat is of a survey of another survey, such as the representation of a subdivision of land, a street, or other easement or other interest in the land.
 NO That the information relating to this survey is such that I am unable to make a statement as to the accuracy of the survey.
 Witness my original hand and seal this
 11th day of April, 2007
 Robert T. Kelso
 Tom Kelso
 Land Surveyor
 P.O. Box 1633 RLS L-3145
 GASTONIA, NC 28052



CHANCIL DRIVE and PROPERTY LINES

LINE	BEARING	DISTANCE
1	N 82°56'49" E	304.45'
2	N 82°56'49" E	343.00'
3	N 82°56'49" E	377.13'
4	N 82°56'49" E	345.59'
5	N 82°56'49" E	304.45'
6	N 82°56'49" E	304.45'
7	N 82°56'49" E	304.45'
8	N 82°56'49" E	304.45'
9	N 82°56'49" E	304.45'
10	N 82°56'49" E	304.45'
11	N 82°56'49" E	304.45'
12	N 82°56'49" E	304.45'
13	N 82°56'49" E	304.45'
14	N 82°56'49" E	304.45'
15	N 82°56'49" E	304.45'
16	N 82°56'49" E	304.45'
17	N 82°56'49" E	304.45'
18	N 82°56'49" E	304.45'
19	N 82°56'49" E	304.45'
20	N 82°56'49" E	304.45'
21	N 82°56'49" E	304.45'
22	N 82°56'49" E	304.45'
23	N 82°56'49" E	304.45'
24	N 82°56'49" E	304.45'
25	N 82°56'49" E	304.45'
26	N 82°56'49" E	304.45'
27	N 82°56'49" E	304.45'
28	N 82°56'49" E	304.45'
29	N 82°56'49" E	304.45'
30	N 82°56'49" E	304.45'
31	N 82°56'49" E	304.45'
32	N 82°56'49" E	304.45'
33	N 82°56'49" E	304.45'
34	N 82°56'49" E	304.45'
35	N 82°56'49" E	304.45'
36	N 82°56'49" E	304.45'
37	N 82°56'49" E	304.45'
38	N 82°56'49" E	304.45'
39	N 82°56'49" E	304.45'
40	N 82°56'49" E	304.45'
41	N 82°56'49" E	304.45'
42	N 82°56'49" E	304.45'
43	N 82°56'49" E	304.45'
44	N 82°56'49" E	304.45'
45	N 82°56'49" E	304.45'
46	N 82°56'49" E	304.45'
47	N 82°56'49" E	304.45'
48	N 82°56'49" E	304.45'
49	N 82°56'49" E	304.45'
50	N 82°56'49" E	304.45'
51	N 82°56'49" E	304.45'
52	N 82°56'49" E	304.45'
53	N 82°56'49" E	304.45'
54	N 82°56'49" E	304.45'
55	N 82°56'49" E	304.45'
56	N 82°56'49" E	304.45'
57	N 82°56'49" E	304.45'
58	N 82°56'49" E	304.45'
59	N 82°56'49" E	304.45'
60	N 82°56'49" E	304.45'
61	N 82°56'49" E	304.45'
62	N 82°56'49" E	304.45'
63	N 82°56'49" E	304.45'
64	N 82°56'49" E	304.45'
65	N 82°56'49" E	304.45'
66	N 82°56'49" E	304.45'
67	N 82°56'49" E	304.45'
68	N 82°56'49" E	304.45'
69	N 82°56'49" E	304.45'
70	N 82°56'49" E	304.45'
71	N 82°56'49" E	304.45'
72	N 82°56'49" E	304.45'
73	N 82°56'49" E	304.45'
74	N 82°56'49" E	304.45'
75	N 82°56'49" E	304.45'
76	N 82°56'49" E	304.45'
77	N 82°56'49" E	304.45'
78	N 82°56'49" E	304.45'
79	N 82°56'49" E	304.45'
80	N 82°56'49" E	304.45'
81	N 82°56'49" E	304.45'
82	N 82°56'49" E	304.45'
83	N 82°56'49" E	304.45'
84	N 82°56'49" E	304.45'
85	N 82°56'49" E	304.45'
86	N 82°56'49" E	304.45'
87	N 82°56'49" E	304.45'
88	N 82°56'49" E	304.45'
89	N 82°56'49" E	304.45'
90	N 82°56'49" E	304.45'
91	N 82°56'49" E	304.45'
92	N 82°56'49" E	304.45'
93	N 82°56'49" E	304.45'
94	N 82°56'49" E	304.45'
95	N 82°56'49" E	304.45'
96	N 82°56'49" E	304.45'
97	N 82°56'49" E	304.45'
98	N 82°56'49" E	304.45'
99	N 82°56'49" E	304.45'
100	N 82°56'49" E	304.45'



PROPERTY LINE ALONG ROADS

LINE	BEARING	DISTANCE
1	N 82°56'49" E	304.45'
2	N 82°56'49" E	343.00'
3	N 82°56'49" E	377.13'
4	N 82°56'49" E	345.59'
5	N 82°56'49" E	304.45'
6	N 82°56'49" E	304.45'
7	N 82°56'49" E	304.45'
8	N 82°56'49" E	304.45'
9	N 82°56'49" E	304.45'
10	N 82°56'49" E	304.45'
11	N 82°56'49" E	304.45'
12	N 82°56'49" E	304.45'
13	N 82°56'49" E	304.45'
14	N 82°56'49" E	304.45'
15	N 82°56'49" E	304.45'
16	N 82°56'49" E	304.45'
17	N 82°56'49" E	304.45'
18	N 82°56'49" E	304.45'
19	N 82°56'49" E	304.45'
20	N 82°56'49" E	304.45'
21	N 82°56'49" E	304.45'
22	N 82°56'49" E	304.45'
23	N 82°56'49" E	304.45'
24	N 82°56'49" E	304.45'
25	N 82°56'49" E	304.45'
26	N 82°56'49" E	304.45'
27	N 82°56'49" E	304.45'
28	N 82°56'49" E	304.45'
29	N 82°56'49" E	304.45'
30	N 82°56'49" E	304.45'
31	N 82°56'49" E	304.45'
32	N 82°56'49" E	304.45'
33	N 82°56'49" E	304.45'
34	N 82°56'49" E	304.45'
35	N 82°56'49" E	304.45'
36	N 82°56'49" E	304.45'
37	N 82°56'49" E	304.45'
38	N 82°56'49" E	304.45'
39	N 82°56'49" E	304.45'
40	N 82°56'49" E	304.45'
41	N 82°56'49" E	304.45'
42	N 82°56'49" E	304.45'
43	N 82°56'49" E	304.45'
44	N 82°56'49" E	304.45'
45	N 82°56'49" E	304.45'
46	N 82°56'49" E	304.45'
47	N 82°56'49" E	304.45'
48	N 82°56'49" E	304.45'
49	N 82°56'49" E	304.45'
50	N 82°56'49" E	304.45'
51	N 82°56'49" E	304.45'
52	N 82°56'49" E	304.45'
53	N 82°56'49" E	304.45'
54	N 82°56'49" E	304.45'
55	N 82°56'49" E	304.45'
56	N 82°56'49" E	304.45'
57	N 82°56'49" E	304.45'
58	N 82°56'49" E	304.45'
59	N 82°56'49" E	304.45'
60	N 82°56'49" E	304.45'
61	N 82°56'49" E	304.45'
62	N 82°56'49" E	304.45'
63	N 82°56'49" E	304.45'
64	N 82°56'49" E	304.45'
65	N 82°56'49" E	304.45'
66	N 82°56'49" E	304.45'
67	N 82°56'49" E	304.45'
68	N 82°56'49" E	304.45'
69	N 82°56'49" E	304.45'
70	N 82°56'49" E	304.45'
71	N 82°56'49" E	304.45'
72	N 82°56'49" E	304.45'
73	N 82°56'49" E	304.45'
74	N 82°56'49" E	304.45'
75	N 82°56'49" E	304.45'
76	N 82°56'49" E	304.45'
77	N 82°56'49" E	304.45'
78	N 82°56'49" E	304.45'
79	N 82°56'49" E	304.45'
80	N 82°56'49" E	304.45'
81	N 82°56'49" E	304.45'
82	N 82°56'49" E	304.45'
83	N 82°56'49" E	304.45'
84	N 82°56'49" E	304.45'
85	N 82°56'49" E	304.45'
86	N 82°56'49" E	304.45'
87	N 82°56'49" E	304.45'
88	N 82°56'49" E	304.45'
89	N 82°56'49" E	304.45'
90	N 82°56'49" E	304.45'
91	N 82°56'49" E	304.45'
92	N 82°56'49" E	304.45'
93	N 82°56'49" E	304.45'
94	N 82°56'49" E	304.45'
95	N 82°56'49" E	304.45'
96	N 82°56'49" E	304.45'
97	N 82°56'49" E	304.45'
98	N 82°56'49" E	304.45'
99	N 82°56'49" E	304.45'
100	N 82°56'49" E	304.45'

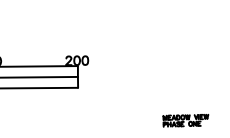
KESWICK SUBDIVISION PHASE ONE

DEED BOOK 4344 PAGE 2442
 NEAR CITY OF BESSMER CITY
 CHERRYVILLE TOWNSHIP
 GASTON COUNTY
 NORTH CAROLINA

TAX PID # 163397
 SURVEYED APRIL 2, 2007
 Scale in Feet
 1" = 100'

LEGEND

---	DRAINAGE & UTILITY EASEMENTS
---	BUILDING SETBACKS
---	FRONT & R/W
---	SEES
---	STREET SIDE
---	REAR
---	FLOOD PLAIN
---	COMMUNITY PANEL NUMBER 370100108-E DTD 3-03-03
---	CREATED BY: [Name]
---	NO FLOOD PLAIN



NOT LOCATED WITHIN 5,000 FT. OF M.C.S. CONTROL
 30 FT. BUFFER FROM TOP OF CREEK BANK
 ZONED R-A